



# VANUATU CLIMATE UPDATE

Vanuatu Meteorology and Geo-Hazard Department

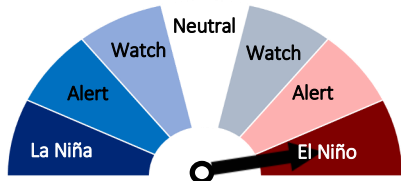


ISSUE

November 2023

## OL HAELAET

ENSO Aotluk: El Niño



Renfol blong pas tri manis: Okis kasem Oktoba

<b>Abav nomol:</b>	Pekoa, lamap, Bauerfield, port vila, Whitegrass mo aneityum
<b>Nomol:</b>	
<b>Bilou Nomol:</b>	Sola

Level blong draot long las tri manis: Okis kasem Oktoba

<b>Nogat Draot:</b>	Nokat draot lo ful
<b>Watch:</b>	
<b>Woning:</b>	
<b>Draot:</b>	

4 wik Aotluk blong korel rif kasem 10 Disemba

<b>Nogat Stress:</b>	Ful Vanuatu
<b>Waj:</b>	
<b>Woning</b>	
<b>Alert Level 1:</b>	
<b>Alert Level 2:</b>	

## KLAEMET AOTLUK DISEMBA KASEM FEBRUARY 2023

### RENFOL FOKAST

**Overall Vanuatu:** Vanuatu I very laikly blo kasem ol bilou nomol lo tri manis blong Disemba kasem Februari.

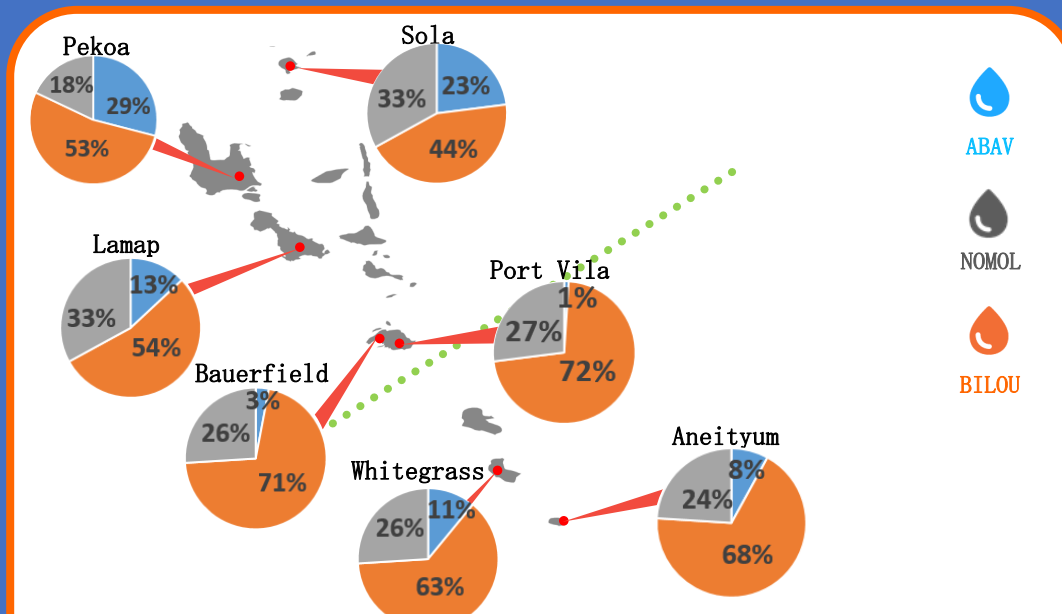
Long **Noten Rijen**, I kat moderate konfidens blo evri aelan I laikly blo kasem ol Bilou nomol renfol.

Long **Sentrol rijen**, konfidens hemi moderate blo ol aelans i laikly blo kasem bilou nomol renfol.

mo **souten rijen**, konfidens hemi hae blo every aelan bae oli very laikly blo kasem ol bilou nomol renfol

ENSO aotluk: Vanuatu hemi stap yet long **El Niño (longfala drae taim)**

## 3 MANIS RENFOL AOTLUK: DISEMBA KASEM FEBRUARI 2023



Station	Aotluk Hemi baias iko long	Bilou mm (probability)	Nomol mm (probability)	Abav mm (probability)
Sola	Bilou Nomol	939.6< (44%)	939.6— 1213.2(33%)	>1213.2(23%)
Pekoa	Bilou Nomol	< 697.9(53%)	697.9— 937.6(18%)	>937.6(29%)
Lamap	Bilou Nomol	<478.4(54%)	478.4— 631.6(33%)	>631.6(13%)
Bauerfield	Bilou nomol	<580.8(71%)	580.8— 906.9(27%)	>906.9(3%)
Port Vila	Bilou Nomol	<554.9(71%)	455.4— 801.9(27%)	>801.9(1%)
Whitegrass	Bilou Nomol	<353.1(63%)	353.1— 535.3(26%)	>535.3(11%)
Aneityum	Bilou Nomol	<508.0(68%)	508.0— 886.9(24%)	>886.9(8%)

## GENERAL LUKLUK

### Southern Oscillation Index:

30 dei SOI valiu we i end lo 6 Novemba 2023 hemi -7.5, lo 60 days mo 90 days SOI hemi -10.4 kasem -10.0. SOI we i lou bitim -7, hemi stap soem paten blong wan El Niño.

**Tred Win:** pawa blong tred win lo 5 days we I finis 2 Novemba 2023, oli weak bitim afarej nao lo westen tropikol pasifik. Tred win oli bin weak bitim afarej lo pas tri manis.

**Sea surface temperature (SST):** Tempreja blong solwota oli wom bitim avarej lo bigfala area around lo ikueita.

**Claod:** Ol claod long sentrol pacific naoia oli bitim afarej.

**ENSO Aotluk:** ENSO status hemi stap yet lo wan El Niño .

**Ol Model Fokas:** efri klaemet models oli indicate se bae tempreja blo solwota bae oli remain abav lo threshold blo EL Niño kasem en blo 2023 mo save stap kasem 2024.



# VANUATU CLIMATE UPDATE

Vanuatu Meteorology and Geo-Hazard Department



## ENSO TERMS

**El Nino Southern Oscillation (ENSO):** Hemia hemi tokbaot saekol blong El Nino mo La Nina mo ifek we tufala igat long renfol blong yumi.

**El Nino:** Hemia hemi taem we ol tred win long



Pasifik oli lusum paoa blong olgeta mo ol wom wota oli mov igo long is. Long taem ia klaod nasara tu imuv wetem wom wota. Long Vanuatu wan El Nino hemi minim se bai renfol hemi go daon bitim nomol

**La Nina:** Hemia hemi taem we ol tred win long



Pasifik oli kam strong moa mo oli pusum ol wom wota igo long wes Pasifik mo movum klaod nasara tu igo lo wes. Hemia hemi oposit blong El Nino. Long Vanuatu La Nina hemi minim se bai i gat renfol we i bitim nomol. Samtaem oli stap talem se La Nina hemi wan anti-ENSO (anti-El Nino Southern Oscillation) event.

**ENSO Situation Hemi Neutral:** Hemi taem we inogat wan El Nino o wan La Nina.

**SOI (Southern Oscillation Index):** Hemia hemi mesament blong difrens long ea presa bitwin Darwin (12° S, 131° E) mo Tahiti (17°S, 150° W). Taem difrens hemi stap bitwin +7 mo -7 hemia iminim se yumi stap long wan Neutral ENSO. Taem difrens hemi bitim +7 hemia iminim se atmosfera hemi stap long condisen blong La Nina mo bai yumi save kasem plante ren. Be sapos hemi bitim -7 hemia iminim se atmosfera hemi stap long condisen blong El nino mo bai ples hemi save drae.

**SST (Sea Surface Temperature):** Tempereja o hot blong solwota.

## GLOSSARY

**Baias Towards:** Taem model hemi soem se yumi usum probability blong calculetem se wanem probability nao hemi mo hae. Probability we hemi hae moa nao yumi usum olsem forecast blong yumi.

**Konfidens:** Taem model hemi givim wan aotluk, yumi usum konfidens blong luk se fokast ia i save hapen o no. Hae konfidens i minim se igat bigfala janis se fokast bai i hapen.

**Drae Sisen:** Hemi ol manis long evri yia we renfol i smol bitim ol narafala manis. Long Vanuatu drae sisen i stat long manis Mei kasem Oktoba. Drought: Taem we renfol long wan eria hemi go daon bitim averej renfol mo hemi stat blong afektem ol plant mo wota long graon, hemia oli talem se eria ia i stap long wan draot.

**Favoured:** Wanem nao com-puta hemi stap luk; se bae igat bigfala janis se se bai i hapen.

**Fokast:** Wan lukluk blong wanem bai i save hapen long fiuja. Wan narafala toktok we oli usum tu hemi "outlook". I gat weta fokast mo sisenal fokast. Klamet: Averej paten blong weta blong wan ples ova long wan longfala taem (eksambol 30 yia o moa).

**Probability:** Fasin blong calculetem se wanem nao janis blong wan event hemi happen. SCOPIC hemi wan probability model.

**KLAEMET HEMI WANEM WE YU EXPECTEM BE WETA HEMI WANEM WE I HAPPEN O WANEM WE YU KASEM**

**Abav nomol renfol:**

Renfol we hemi bigwan bitim averej renfol blong manis ia long wan station.

**Nomol renfol:** Renfol we i kasem averej amaon we yumi stap kasem oltaem blong manis ia.

**Bilou nomol renfol:** Renfol we i go daon tumas bitim averej

renfol blong manis ia.

**Sisenal Fokast:** Hemi lukluk long wanem kaem kondisen nao bai i save happen long ol manis we oli stap kam folem ol kondisen blong solwota mo ea (eksambol hemi renfol).

**Verifikesen:** Hemia wei blong checkem se renfol we yumi kasem long trifala manis we i pas hemi semak long wanem we yumi bin fokastem o no.

**Weta:** Kondisen blong ea olsem temperaja, renfol, spid blong win, long wan sot taem olsem samfala hour kasem samfala dei. Weta i jenis long evri dei mo ol jenis ia hemi isi blong yumi luk.

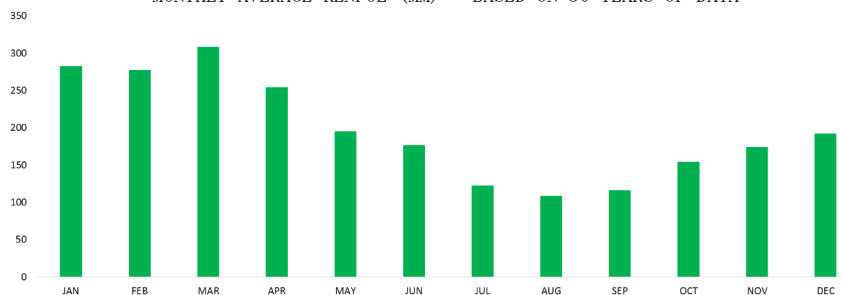
**Weta Fokast:** Hemi wan lukluk we yumi save expektem long wanem weta nao bai yumi save kasem nekis 2 wik.

**Wet Sisen:** (taem blong ren): Hemi ol manis long wan yia we yumi stap kasem tumas ren bitim ol narafala manis. Long Vanuatu taem blong ren hemi stap long Novemba kasem Epril long nekis yia.



## HISOTORICAL RENFOL FOR ALL STATIONS IN VANUATU

MONTHLY AVERAGE RENFOL (MM) - BASED ON 30 YEARS OF DATA



STATION	JAN	FEB	MAR	APR	MAY	JUN	JUL	AUG	SEP	OCT	NOV	DEC	TOTAL ANNUAL
Sola	395	361	417	443	385	312	246	323	270	376	373	355	4165
Pekoa	297	309	276	270	195	201	119	98	105	177	201	200	2448
Lamap	255	245	278	218	166	145	116	82	90	137	139	148	2019
Bauerfield	284	325	316	247	188	173	86	83	87	111	156	176	2232
Port Vila	274	209	319	233	170	154	103	92	91	107	141	183	2076
Whitegrass	175	199	198	124	88	87	59	54	60	58	71	90	1263
Aneitym	293	291	355	245	175	161	129	117	112	114	139	191	2322
Vanuatu	282	277	308	254	195	176	122	108	116	154	174	192	2358

### CONTACT US

Call: (678) 23866

Email: [climate@meteo.gov.vu](mailto:climate@meteo.gov.vu)

Visit: [www.vmgd.gov.vu](http://www.vmgd.gov.vu)