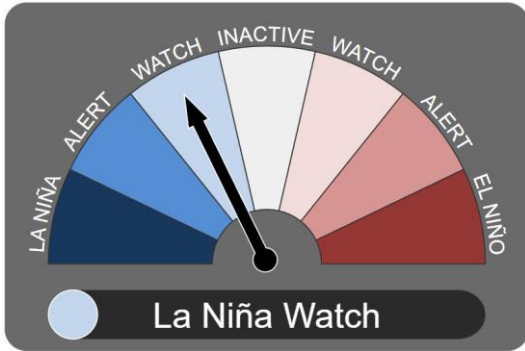


September Climate Bulletin for Fisheries

A monthly bulletin issued by the Vanuatu Meteorology & Geo-hazards Department that provides concise one-month outlook on climatic conditions over Vanuatu that the fisheries sector can use for better decision-making.

El Niño–Southern Oscillation (ENSO)

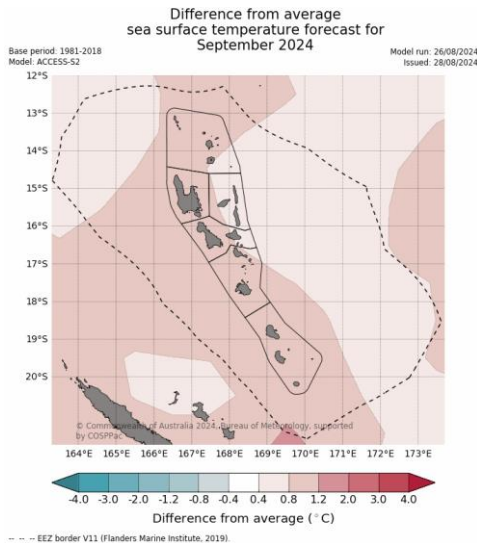


ENSO status is now in La Niña Watch. Indicators are within ENSO-neutral thresholds, but there are signs a La Niña may develop in the following months. Rainfall and temperatures are neither enhanced nor diminished during the Neutral phase.

Status blong ENSO i stap naoia long La Niña. Olgeta Indiketa oli stap insaed long ENSO-neutral threshold, be i gat saen se wan La Niña i save fom long olgeta manis we oli stap kam ia. Renfol mo tempereja oli no develop mo oli no go daon long taem blong Nutrol pat.

ENSO est désormais en phase de veille du phénomène La Niña. Les indicateurs se situent dans les seuils de neutralité ENSO, mais des signes indiquent qu'une La Niña pourrait se développer dans les mois à venir. Les précipitations et les températures ne sont ni augmentées ni diminuées pendant la phase neutre.

Sea Surface Temperature Forecast

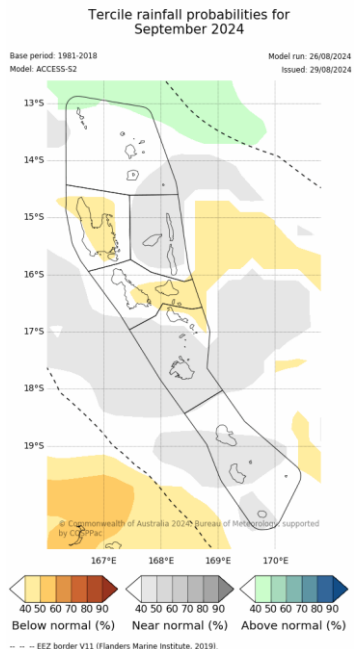


Sea surface temperature is expected to be 0.4-0.8°C warmer in Penama province, while the rest of the country expects 0.8-1.2°C warmer temperatures.

Tempereja long seves blong solwota bae i wom long Penama provins we bae hemi save stap long 0.4-0.8°C, mo bae hemi wom moa long olgeta narafala pat blong Vanuatu we bae i save stap long 0.8-1.2°C

La température de la surface de la mer devrait être plus élevée de 0,4 à 0,8 °C dans la province de Penama, tandis que le reste du pays s'attend à des températures plus élevées de 0,8 à 1,2 °C.

Rainfall Outlook



Rainfall is predicted to be below normal in Sanma and parts of Malampa province. The rest of the country is expected to have near normal rainfall for the month.

Bambae renfol long provins blong Sanma mo olgeta pat blong Malampa provins bae i stap andanit long nomol. Bambae i stap kolosap long nomol level long olgeta narafala pat blong Vanuatu.

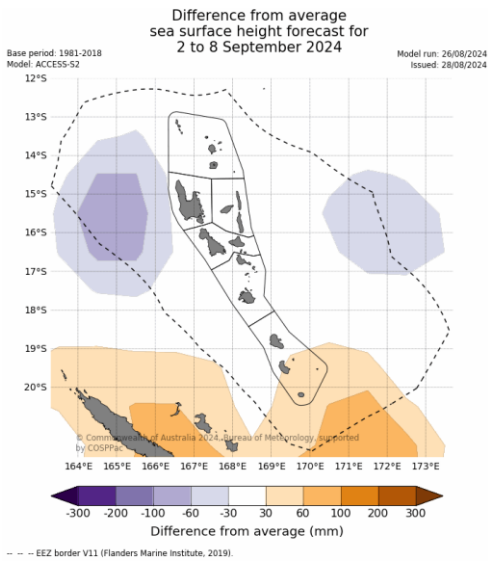
Les précipitations devraient être inférieures à la normale à Sanma et dans certaines parties de la province de Malampa. Le reste du pays devrait connaître des précipitations proches de la normale pour le mois.

Sea Level Forecast

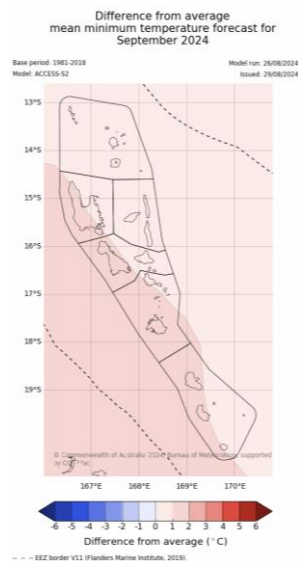
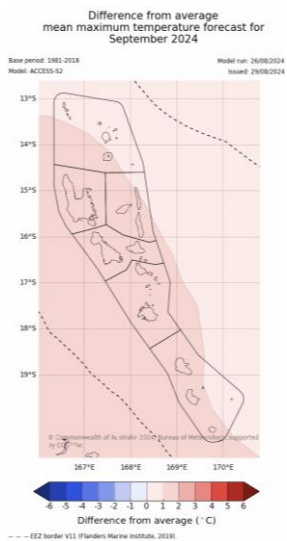
The whole country is expected to have near normal sea level heights, apart from southern Tafea province which expects 30-60mm higher.

Bambae level blong hait blong solwota long ful kaontri i stap kolosap long nomol, be long Tafea Provins bae yumi ekspektem blong i go moa hae long 30-60mm.

L'ensemble du pays devrait connaître des hauteurs de mer proches de la normale, à l'exception de la province méridionale de Tafea qui s'attend à une élévation de 30 à 60 mm.



Maximum and Minimum Temperature Outlook



Above average (0-2°C) day-time temperatures are expected across the country this month.

- Tempereja long dei taem bae i stap antap long averej (0-2°C) raon long kaontri long manis ia
- Des températures diurnes supérieures à la moyenne (0-2°C) sont attendues sur l'ensemble du pays ce mois-ci.

Above average (0-2°C) night-time temperatures are expected across the country this month.

- Tempereja long naet taem bae i stap antap long averej (0-2°C) raon long kaontri long manis ia
- Des températures nocturnes supérieures à la moyenne (0-2°C) sont attendues dans tout le pays ce mois-ci.

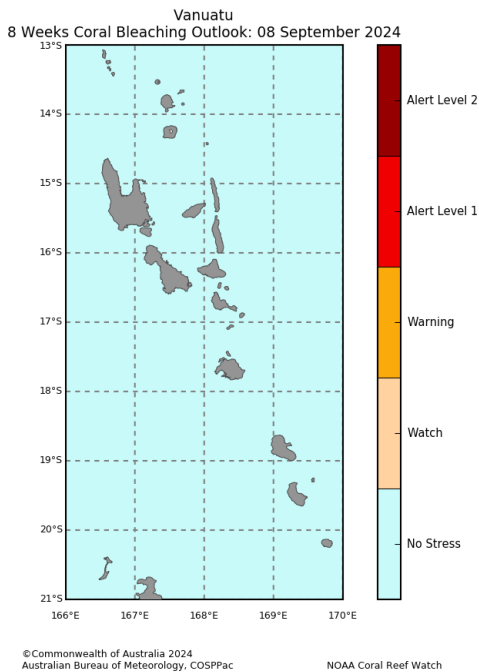
Tide Outlook for September

Port Vila Harbour					
Lowest Tide	Date	Time (VUT)	Highest Tide	Date	Time (VUT)
0.22m	17 Sep	10:55am	1.59m	19 Sep	6:34pm

Luganville Harbour					
Lowest Tide	Date	Time (VUT)	Highest Tide	Date	Time (VUT)
0.19m	17 Sep	10:09am	1.87m	18 Sep	4:20am

Moon Phases for September

Fes Kwata	Ful Moon	Las Kwata	Niu Moon
11 September	18 September	25 September	3 September

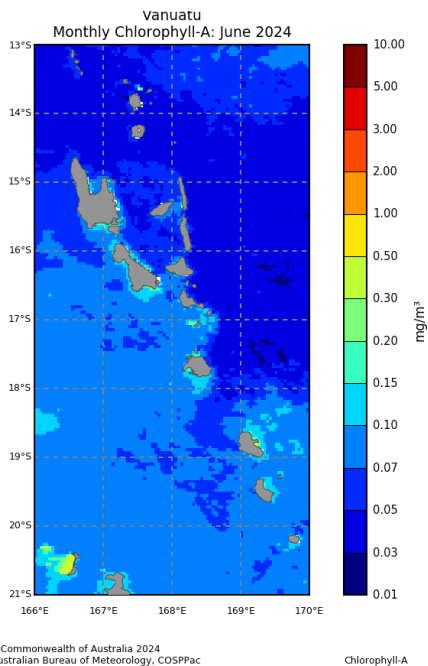


Coral Bleaching Outlook

The whole country is at a No Stress level for coral bleaching.

Ful kaontri i stap long No Stress level long saed blong korol blijing

L'ensemble du pays a atteint le niveau « Pas de stress » pour ce qui est du blanchiment des coraux.



Chlorophyll A status from June 2024

Chlorophyll concentrations from June show slightly higher values on the south-western side of the country. Higher concentrations were found at the coasts of Malakula, Emae and particularly Erromango which recorded values of up to 1.00mg/m³.

Konsentresen blong *Chlorophyll* stat long manis Jun i soemaot se valiu blong hem i hae smol long saot-wes saed blong kaontri. Konsentresen i hae long olgeta eria long solwota long Malekula, Emae, mo espeseli Erromango we oli bin rikodem wan valiu blong we i go kasem 1.00mg/m³.

Les concentrations de chlorophylle du mois de juin montrent des valeurs légèrement plus élevées dans le sud-ouest du pays. Des concentrations plus élevées ont été relevées sur les côtes de Mallicolo, d'Emae et surtout d'Erromango, qui ont enregistré des valeurs allant jusqu'à 1,00 mg/m³.

Bulletin Highlights for September 2024

ENSO:	La Niña Watch	Max Temp:	↑
SST:	↑	Min Temp:	↑
Rainfall:	↓	Coral Bleaching:	↓
Sea Level:	–	Chlorophyll:	–

Climate Smart Recommendations for Fisheries Sector

		Offshore fisheries	Lagoon fisheries
EL Nino Southern Oscillation (ENSO)	El Nino La Nina		
Sea Surface Temperatures	Further South	- Higher likelihood of warmer water tuna species skipjack and yellow fin. - Fish on warm side of SST fronts for natural biological hotspots.	
Sea Level	> 200 mm < - 200 mm		
Rainfall	Above normal Below normal		
Maximum and Minimum Temperature	Above average Below average		
Coral Bleaching Level	Warning Alert 1 Alert 2		- Reduce storm water and fertilizer runoff - Avoid using herbicides and pesticides - When anchoring boats, avoid anchoring near places with coral reefs - Encourage offshore fishing to alleviate stressors in the lagoon.
Chlorophyll	Above normal	Likely higher stocks for smaller pelagic fish	- Higher risks of lagoon fish disease, encourage offshore fishing - Limit nutrient runoff & monitor for algal blooms - Target high chlorophyll regions for crown of thorns starfish management activities
High and Low Tides	High Tide Low Tide		
Moon Phases	First Quarter Full moon Last Quarter New Moon		

For more info, contact us:

VMGD: Free Toll (116) Telephone (+678 23866) Email (climate@meteo.gov.vu)
Fisheries Department: Telephone (+678 23119) Email (ContactFisheries@vanuatu.gov.vu)

SUPPORTED BY:



Australian Government
Bureau of Meteorology



SPREP
Secretariat of the Pacific Regional
Environment Programme



GREEN
CLIMATE
FUND