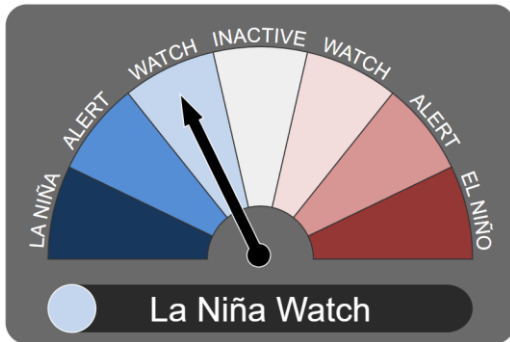


August Climate Bulletin for Fisheries

A monthly bulletin issued by the Vanuatu Meteorology & Geo-hazards Department that provides concise one-month outlook on climatic conditions over Vanuatu that the fisheries sector can use for better decision-making.

El Niño–Southern Oscillation (ENSO)

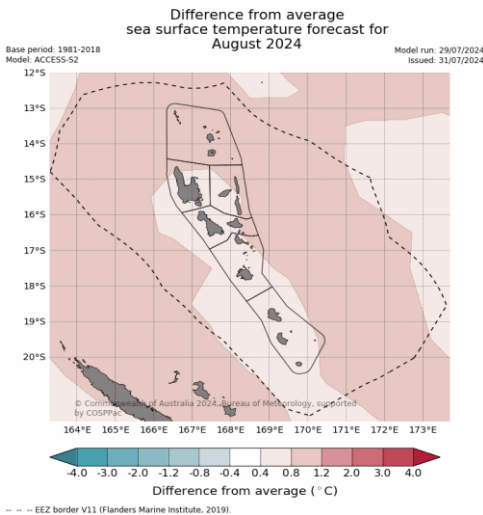


ENSO status is now in La Niña Watch. Indicators are within ENSO-neutral thresholds, but there are signs a La Niña may develop in the following months. Rainfall and temperatures are neither enhanced nor diminished during the Neutral phase.

Status blong ENSO i soemaot se i gat saen se La Niña i save fom. Olgeta Indiketa insaed long ENSO-neutral threshold, be i gat saen se wan La Niña i save fom long olgeta manis we oli stap kam ia. Renfol mo tempereja oli no develop mo oli no go daon long taem blong Nutrol pat. .

L'état du phénomène ENSO se trouve désormais dans la zone de veille de La Niña. Les indicateurs se situent dans les seuils ENSO neutres, mais des signes indiquent qu'une La Niña pourrait se développer au cours des prochains mois. Les précipitations et les températures ne sont ni augmentées ni diminuées pendant la phase neutre.

Sea Surface Temperature Forecast

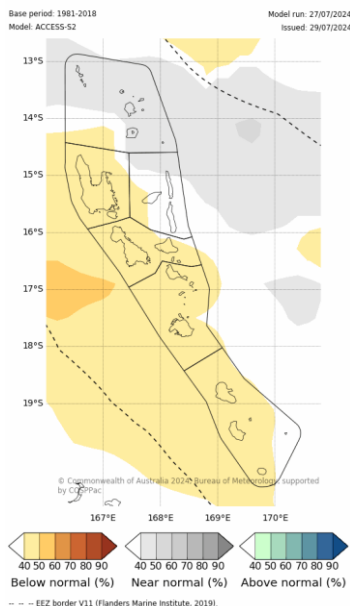


Sea surface temperature is expected to be 0.8-1.2°C warmer in Torba and Penama provinces, while the rest of the country expects 0.4-0.8 °C warmer temperatures.

Tempereja long seves blong solwota bae i wom long Torba mo Penama provins we bae hemi save stap long 0.8-1.2°C, mo bae hemi wom moa long olgeta narafala pat blong Vanuatu bae i save stap long 0.4-0.8°C

La température de la surface de la mer devrait être plus élevée de 0,8 à 1,2 °C dans les provinces de Torba et Penama, tandis que le reste du pays s'attend à des températures plus élevées de 0,4 à 0,8 °C.

Tercile rainfall probabilities for August 2024



Rainfall Outlook

Rainfall is predicted to be near normal in Torba province, and below normal for the rest of the country.

Bambae renfol long provins blong Torba bae i stap kolosap long nomol, bambae i stap andanit long nomol level long olgeta narafala pat blong Vanuatu.

Les précipitations devraient être proches de la normale dans la province de Torba et inférieures à la normale dans le reste du pays.

SUPPORTED BY:

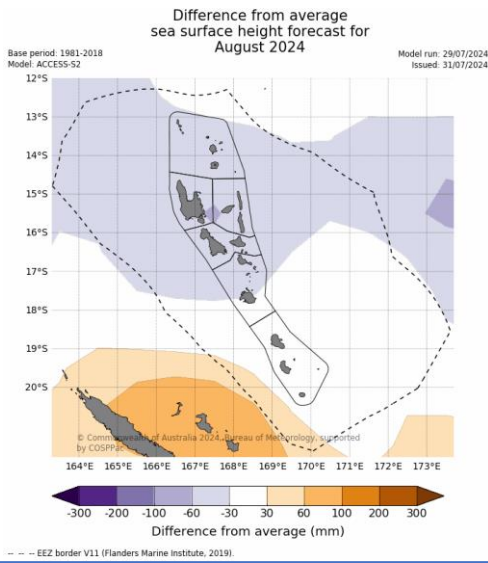


Sea Level Forecast

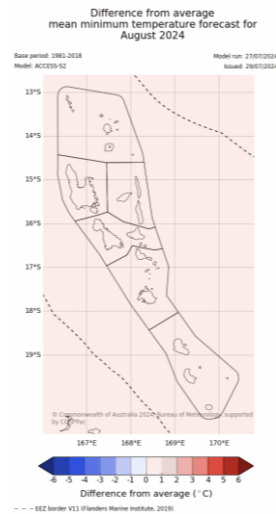
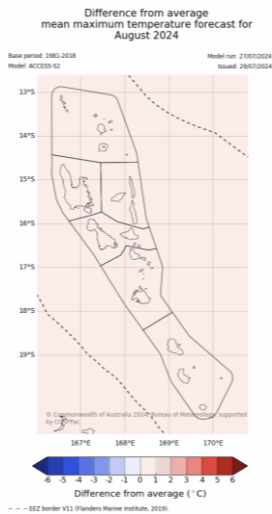
Tafea province is expected to have normal sea level heights, while the rest of the country is forecasted to be 30-60mm lower than normal.

Bambae level blong hait blong solwota long provins blong Tafea i nomol, mo long olgeta narafala pat blong kaontri bambae i stap long 30-60mm andanit long nomol level.

La province de Tafea devrait connaître des élévations normales du niveau de la mer, tandis que le reste du pays devrait être 30 à 60 mm plus bas que la normale.



Maximum and Minimum Temperature Outlook



Slightly above average (0-1°C) day-time temperatures are expected across the country this month.

- *Tempereja long dei taem bae i go antap smol nomo long averej (0-1°C) raon long kaontri long manis ia*
- *Des températures diurnes légèrement supérieures à la moyenne (0-1°C) sont attendues sur l'ensemble du pays ce mois-ci.*

Slightly above average (0-1°C) night-time temperatures are expected across the country this month.

- *Tempereja long naet taem bae i go antap smol nomo long averej (0-1°C) raon long kaontri long manis ia*
- *Des températures nocturnes légèrement supérieures à la moyenne (0-1°C) sont attendues sur l'ensemble du pays ce mois-ci.*

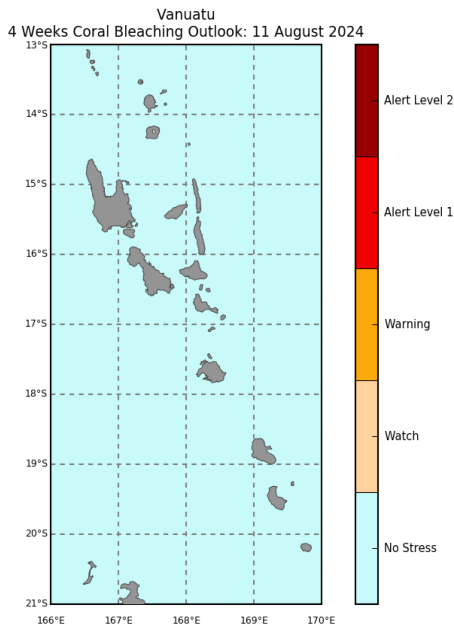
Tide Outlook for August

Port Vila Harbour					
Lowest Tide	Date	Time (VUT)	Highest Tide	Date	Time (VUT)
0.13m	20 Aug	12:06pm	1.53m	21 Aug	6:13am

Luganville Harbour					
Lowest Tide	Date	Time (VUT)	Highest Tide	Date	Time (VUT)
0.13m	20 Aug	11:18am	1.87m	20 Aug	4:39am

Moon Phases for August

Fes Kwata	Ful Moon	Las Kwata	Niu Moon
13 August	20 August	26 August	4 August



©Commonwealth of Australia 2024
Australian Bureau of Meteorology, COSPPac

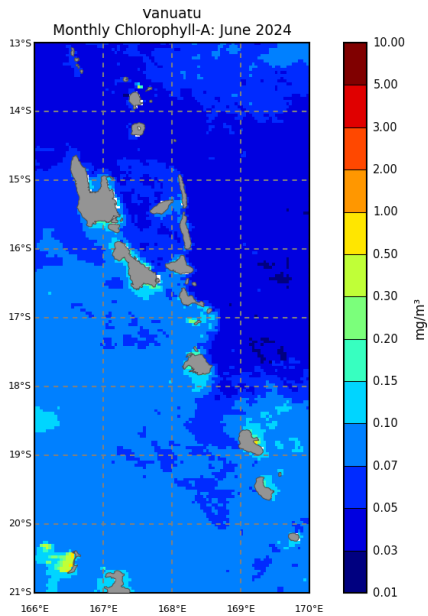
NOAA Coral Reef Watch

Coral Bleaching Outlook

The whole country is at a No Stress level for coral bleaching.

Ful kaontri i stap long No Stress level long saed blong korol blijing

L'ensemble du pays a atteint le niveau « Pas de stress » en ce qui concerne le blanchiment des coraux.



©Commonwealth of Australia 2024
Australian Bureau of Meteorology, COSPPac

Chlorophyll-A

Chlorophyll A status from June 2024

Chlorophyll concentrations from June show slightly higher values on the south-western side of the country. Higher concentrations were found at the coasts of Malakula, Emae and particularly Erromango which recorded values of up to 1.00mg/m³.

Konsentresen blong Chlorophyll stat long manis Jun i soemaot se valiu blong hem i hae smol long saot-wes saed blong kaontri. Konsentresen i hae long olgeta eria long solwota long Malekula, Emae, mo espeseli Erromango we oli bin rikodem wan valiu blong we i go kasem 1.00mg/m³.

Les concentrations de chlorophylle du mois de juin montrent des valeurs légèrement plus élevées dans le sud-ouest du pays. Des concentrations plus élevées ont été relevées sur les côtes de Mallicolo, d'Emae et surtout d'Erromango, qui ont enregistré des valeurs allant jusqu'à 1,00 mg/m³.

Bulletin Highlights for August 2024

ENSO:	La Niña Watch	Max Temp:	↑
SST:	↑	Min Temp:	↑
Rainfall:	↓	Coral Bleaching:	↓
Sea Level:	↓	Chlorophyll:	–

Climate Smart Recommendations for Fisheries Sector

		Offshore fisheries	Lagoon fisheries
EL Nino Southern Oscillation (ENSO)	El Nino La Nina		
Sea Surface Temperatures	Further South	- Higher likelihood of warmer water tuna species skipjack and yellow fin. - Fish on warm side of SST fronts for natural biological hotspots.	
Sea Level	> 200 mm < - 200 mm		
Rainfall	Above normal Below normal		
Maximum and Minimum Temperature	Above average Below average		
Coral Bleaching Level	Warning Alert 1 Alert 2		- Reduce storm water and fertilizer runoff - Avoid using herbicides and pesticides - When anchoring boats, avoid anchoring near places with coral reefs - Encourage offshore fishing to alleviate stressors in the lagoon.
Chlorophyll	Above normal	Likely higher stocks for smaller pelagic fish	- Higher risks of lagoon fish disease, encourage offshore fishing - Limit nutrient runoff & monitor for algal blooms - Target high chlorophyll regions for crown of thorns starfish management activities
High and Low Tides	High Tide Low Tide		
Moon Phases	First Quarter Full moon Last Quarter New Moon		

For more info, contact us:

VMGD: Free Toll (116) Telephone (+678 23866) Email (climate@meteo.gov.vu)
Fisheries Department: Telephone (+678 23119) Email (ContactFisheries@vanuatu.gov.vu)

SUPPORTED BY:



Australian Government
Bureau of Meteorology



SPREP
Secretariat of the Pacific Regional
Environment Programme



GREEN
CLIMATE
FUND