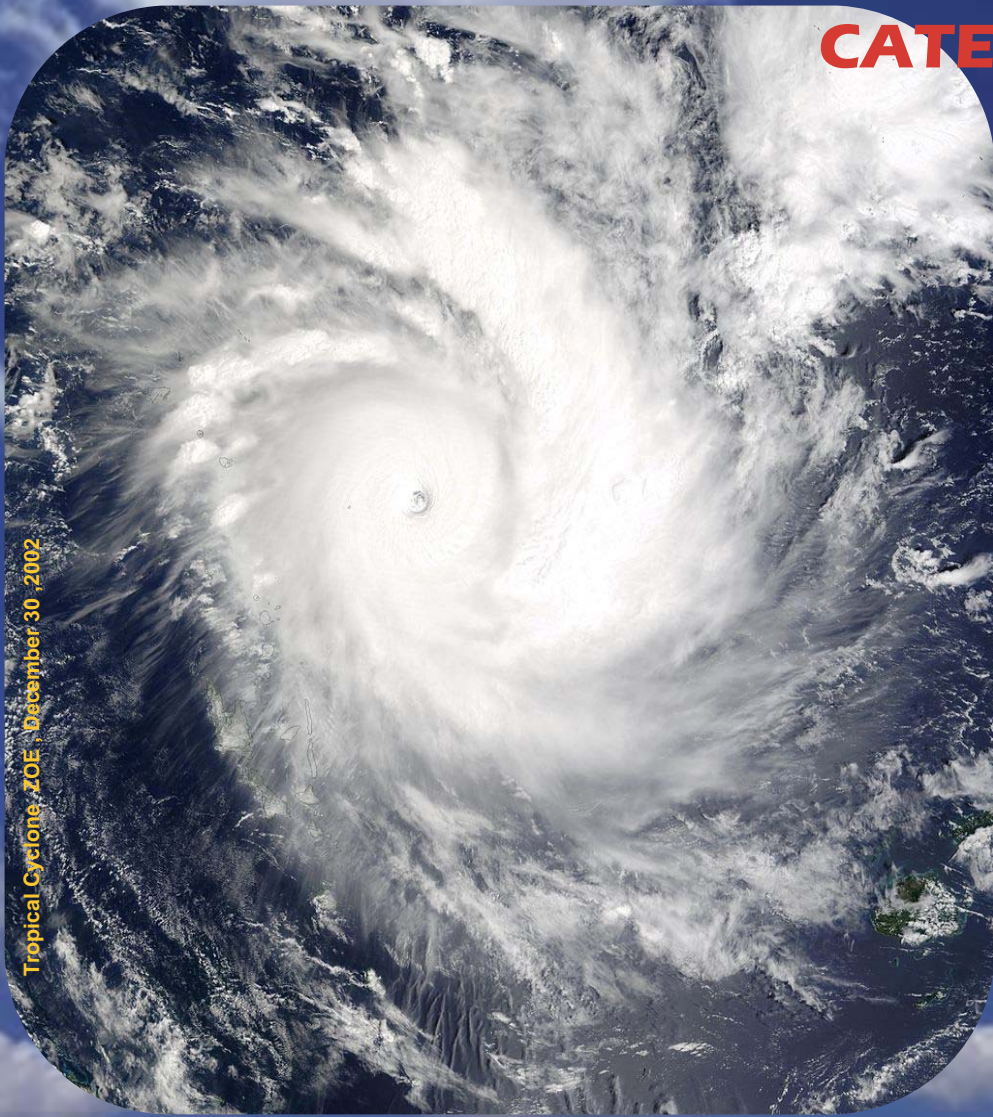


VANUATU TROPICAL CYCLONE BULLETINS & WARNING CATEGORIES









Tropical Cyclone ZOE, December 30, 2002



- TROPICAL CYCLONE INFORMATION**
 A bulletin containing Tropical Cyclone will give progress information on the development of an approaching cyclone (Vanuatu's Area) or the progress of a cyclone still some distance away, if there is significant probability that winds over one or more parts of Vanuatu may later reach *gale or stronger*. Tropical cyclone information will be issued *twice daily*.
- TROPICAL CYCLONE ADVISORY**
 Advisory is issued where possible *36 hours* before the likely onset of *gales or stronger* winds and will be maintained until such time as specific warnings become necessary, or the threat to Vanuatu subsides. Tropical Cyclone Advisories will be issued *every six hours*.
- TROPICAL CYCLONE WARNING**
 Tropical Cyclone Warning will give *Gale, Storm or Hurricane Warning* for specified areas according to the maximum average wind force expected and will be issued when there is an expected occurrence of gales or stronger winds *within 24 hours*. Apart from average wind speeds, expected winds in momentary gusts will also be given.
- FLASH WARNING**
 If information becomes available which points to a sudden and substantial change in the situation, thus invalidating the current warning, a bulletin will be issued as soon as possible to inform users of the sudden change in the situation. Such an intermediate Bulletin will be brief and contain essential information including, for example, new areas threatened or changed of movement of the cyclone. The numbering sequence for the bulletin will be retained. All intermediate bulletins will be identified for emphasis by the prefix "*FLASH*"

Tropical Cyclone Warning Categories

Type of Warning	Average Winds Expected	Typical Effects	Appearance of Wind Effects
Gale Warning	63 KM/HR (34KNOTS) TO 87 KM/HR (47 KNOTS)	Very rough to high seas. Normally minor damage on land, mainly to branches and loose materials. Twisting damage to signs TV aerials, billboards, light-weight awnings canopies damage. Boats break free from moorings. Weak roofing lifts, windows may blow out, aircraft grounded Occasional heavy rain and flooding.	 
Storm Warning	88 KM/HR (48KNOTS) TO 117KM/HR (63KNOTS)	High to very high seas. Damage to trees, crops, overhead wires, temporary shelters and weaker structures. House roofs lift, snaps power lines, garage may clapsed, billboards flipped, moving cars pushed off road, windows broken by flying debris Often accompanied by heavy rain and flooding.	 
Hurricane Warning	> 117KM/HR (63KNOTS)	Phenomenal seas, heavy surf and abnormally high storm tides. Severe damage to trees, crops, Overhead wires, and many buildings. Roofs peel off frame houses, mobile homes tumbles; light-objects missiles. House cladding stripped. Accompanied by torrential rain and flooding.	 

*** Winds averaged over a 10-minute period. Momentary gusts will be much higher, at least 10 knots or over.**

