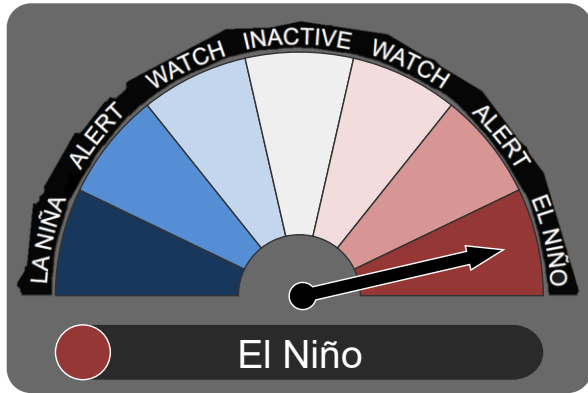


April Climate Bulletin for Tourism

A monthly bulletin issued by the Vanuatu Meteorology & Geo-hazards Department that provides concise one-month outlook on climatic conditions over Vanuatu that local tourism operators and tourists can use for better decision-making.

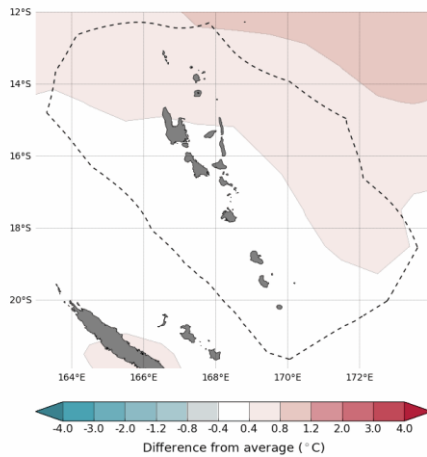


El Niño–Southern Oscillation (ENSO)

ENSO status continues to be in El Niño. El Niño events typically increase the chance of below average rainfall in Vanuatu, resulting in drier conditions and warmer daytime temperatures.

Stetas blong ENSO hemi stap yet long El Niño. Long taem blong wan El Niño, Vanuatu I save kasem bilou nomol renfol we I save mekem ples oli drae plante mo hot lo dei taem.

Difference from average sea surface temperature forecast for April 2024



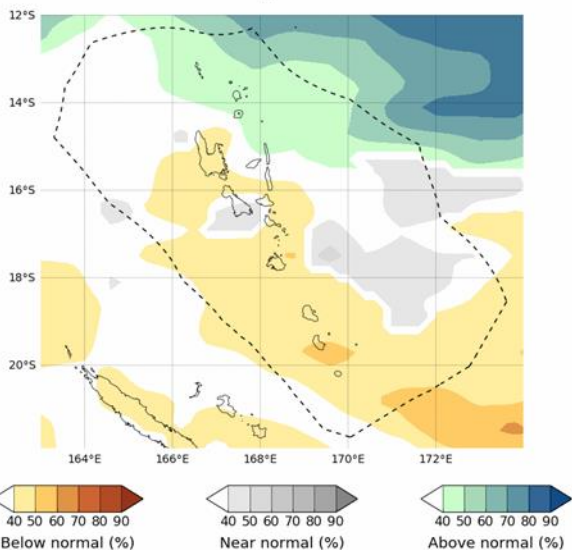
Base period: 1981-2018
Model: ACCESS-S2
© Commonwealth of Australia 2024, Australian Bureau of Meteorology
Shapefile data extracted from Flanders Marine Institute (2019), Maritime Boundaries Geodatabase: Maritime Boundaries and Exclusive Economic Zones (200NM), version 11. Available online at <http://www.maritimesregions.org/>

Sea Surface Temperature Forecast

Sea surface temperature is expected to be near normal across most of the country, and 0.4-0.8°C warmer in Torba province.

Tempreja blong solwota hemi save kasem 0.4-0.8°C klosap long nomol ova long plante area's blong Vanuatu. Tempreja blong solwota bae hemi wom plante nao long Torba Province.

Tercile rainfall probabilities for April 2024



Base period: 1981-2018
Model: ACCESS-S2
© Commonwealth of Australia 2024, Australian Bureau of Meteorology
Shapefile data extracted from Flanders Marine Institute (2019), Maritime Boundaries Geodatabase: Maritime Boundaries and Exclusive Economic Zones (200NM), version 11. Available online at <http://www.maritimesregions.org/>

Rainfall Outlook

Rainfall is predicted to be below normal for most of the country, except for Torba province which is expected to have above normal rainfall.

Plante lo olgeta aelans blong Vanuatu bambae oli save kasem ol bilou nomol renfol eksep Torba province we bae oli expectem abav nomol renfol lo manis Eprel.

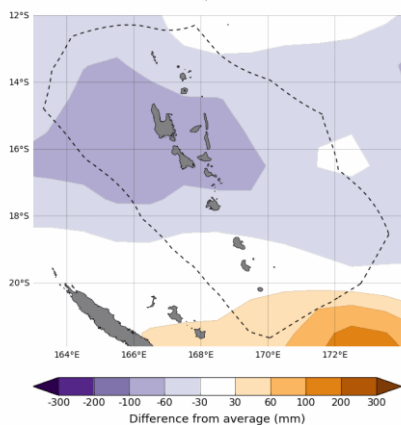
SUPPORTED BY:



Australian Government
Bureau of Meteorology



Difference from average sea surface height forecast for April 2024



Base period: 1981-2018
 Model: ACCESS-52
 © Commonwealth of Australia 2024, Australian Bureau of Meteorology
 Datafile data extracted from Flanders Marine Institute (2019), Maritime Boundaries Geodatabase: Maritime Boundaries and Exclusive Economic Zones (200NM), version 11. Available online at <http://www.maritimeregion.org>
 Model run: 01/04/2024
 Issued: 03/04/2024

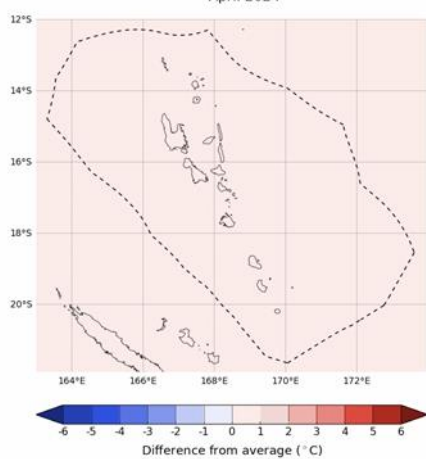
Sea Level Forecast

Most of the country is expected to have lower than normal sea surface heights of up to 100mm. Tafea province is expected to have normal sea level heights.

level blong solwota bae hemi go down bitim nomol wetem 100mm lo plante aelans blong Vanuatu. Level blong solwota long Tafea province bae hemi kasem klosap long ogeta nomol level.

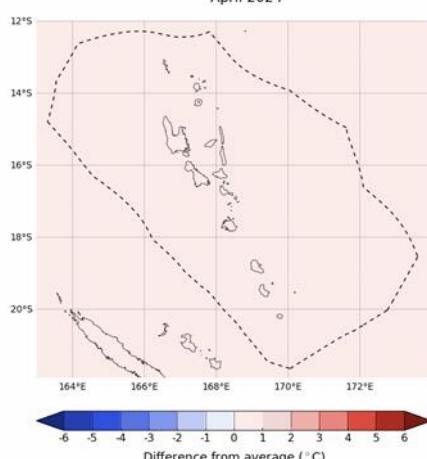
Maximum and Minimum Temperature Outlook

Difference from average mean maximum temperature forecast for April 2024



Base period: 1981-2018
 Model: ACCESS-52
 © Commonwealth of Australia 2024, Australian Bureau of Meteorology
 Datafile data extracted from Flanders Marine Institute (2019), Maritime Boundaries Geodatabase: Maritime Boundaries and Exclusive Economic Zones (200NM), version 11. Available online at <http://www.maritimeregion.org>
 Model run: 25/03/2024
 Issued: 27/03/2024

Difference from average mean minimum temperature forecast for April 2024



Base period: 1981-2018
 Model: ACCESS-52
 © Commonwealth of Australia 2024, Australian Bureau of Meteorology
 Datafile data extracted from Flanders Marine Institute (2019), Maritime Boundaries Geodatabase: Maritime Boundaries and Exclusive Economic Zones (200NM), version 11. Available online at <http://www.maritimeregion.org>
 Model run: 25/03/2024
 Issued: 27/03/2024

Slightly above average (0-1°C) day-time temperatures are expected across the country this month.
 - *Tempreja blong dei bae wom lelebet bitim nomol long kaontri wetem wan diffrens blong 0-1°C.*

Slightly above average (0-1°C) night-time temperatures are expected across the country this month.
 - *Tempreja blong naet bae wom lelebet bitim nomol ova lo kaontri wetem wan diffrens blong 0-1°C.*

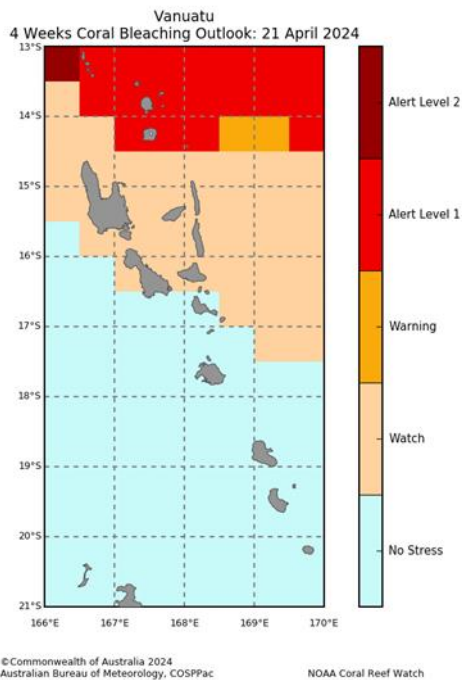
Tide Outlook for April

Port Vila Harbour					
Lowest Tide	Date	Time (VUT)	Highest Tide	Date	Time (VUT)
0.23m	11 Apr	1:45pm	1.56m	9 Apr	5:48am

Luganville Harbour					
Lowest Tide	Date	Time (VUT)	Highest Tide	Date	Time (VUT)
0.18m	7 Apr	10:06pm	1.78m	9 Apr	4:52am

Moon Phases for April

Fes Kwata	Ful Moon	Las Kwata	Niu Moon
16 April	24 April	2 April	9 April

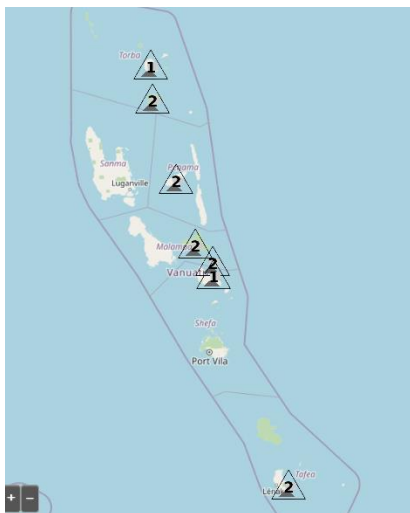


Coral Bleaching Outlook

Alert 1 is in place for Torba province. A Watch is in place for Sanma, Penama and Malampa provinces while Shefa and Tafea provinces are at No Stress.

Alet 1 istap long Torba. Watch alet hemi stap long Sanma, Penama mo Malampa provins. No stress hemi istap long Shefa mo Tafea.

Volcanic Alert Level



Vanuatu Volcanic Activity Summary	
Volcanoes	Current Alert Level
Yasur (Tanna)	2
Lopevi (Lopevi)	2
Benbow and Marum (Ambrym)	2
Manaro Voui (Ambae)	2
Mount Gare (Gau)	2
Suretamatai (Vanua Lava)	1
East Epi	1

Title	Level of Alert
Very Large Eruption	5
Moderate Eruption	4
Minor Eruption	3
Major Unrest	2
Signs of Volcanic Unrest	1
Normal	0

For the latest Volcanic Alert Bulletin, visit:

<https://www.vmgd.gov.vu/vmgd/index.php/geohazards/volcano/volcano-info/current-volcanic-activity>

Bulletin Highlights for April 2024

ENSO:	El Niño	Max Temp:	↑
SST:	↑	Min Temp:	↑
Rainfall:	↓	Coral Bleaching:	↑
Sea Level:	↓	Volcanos:	–

SUPPORTED BY:



Australian Government
Bureau of Meteorology



			<i>Recommended Actions</i>	
			Tourism Operators	Tourists
	R a i n f a l l	<i>Below normal</i>	<p>Use water wisely (e.g., watering lawn/ gardens during cool morning/ evening hours)</p> <p>Provide tourists with resource on water saving behaviour</p> <p>Heavily mulch flower beds to reduce evaporation</p> <p>Desalination plants</p> <p>Avoid use of fire</p>	<p>Use water wisely (use water taps responsibly, reduce shower times)</p> <p>Travel with reusable water bottle and filter</p> <p>Support eco-tourism initiatives with a water conservation focus</p> <p>Participate in activities with less reliance on water (e.g., go bush hiking instead of swimming)</p>
		<i>Above normal</i>	<p>Save enough water for consumption</p> <p>Increase water activities</p> <p>Increase shelter to accommodate rain day activities</p>	<p>Participate in indoor activities</p> <p>Participate in water-based activities</p>
C l i m a t e v a r i a b l e	T e m p e r a t u r e	<i>Above normal</i>	<p>Build low huts near beaches to cool off</p> <p>Encourage sun safe behaviour for tourists (sunscreen, staying in shade, etc.)</p> <p>Do not remove branches from trees nearby</p> <p>Heavily mulch flower beds</p> <p>Provide shade tents and cooling stations</p> <p>Use structural or mechanical aid (e.g., umbrellas or wind breaks)</p> <p>Avoid areas of unfavourable weather conditions (e.g., move from sun to shade)</p>	<p>Apply SPF30+ sunscreen every 2 hours</p> <p>Adjust outdoor activities to avoid thermal stress</p> <p>Stay in the shade where possible</p> <p>Keep hydrated</p> <p>Reduce excess movement</p> <p>Wear a shirt, hat, and sunglasses</p>
C o r a l B l e a c h i n g L e v e l	<i>Above normal</i>	<p>Reduce stormwater and fertilizer runoff</p> <p>Avoid using herbicides and pesticides</p> <p>Work with government to move towards renewable energy</p> <p>For operators nearby coral, provide extensive education to tourists on how to avoid damaging coral reefs</p> <p>When anchoring boats, avoid anchoring near places with coral reefs</p> <p>Tour boats to avoid releasing grey-water discharge or other water pollutants that can be damaging to marine environment</p>	<p>Do not litter in the marine environment</p> <p>If participating in snorkelling or other water activities nearby coral reefs, take care to not damage coral reefs by stepping on, hitting, or touching corals</p> <p>Ensure sunscreen you use is safe for marine life</p>	

For more info, contact us:

VMGD: Free Toll (116) Telephone (+678 23866) Email (climate@meteo.gov.vu)
Tourism office: Telephone (+678 33400) Email (tourism@vanuatu.gov.vu)

SUPPORTED BY:



Australian Government
Bureau of Meteorology



SPREP
Secretariat of the Pacific Regional
Environment Programme



GREEN
CLIMATE
FUND